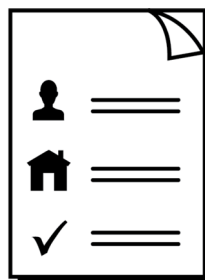




Disability and education in Australia

Ideas from students with disability

Summary



Easy Read



Children and Young People
with Disability Australia

About this booklet



This booklet is from Children and Young People with Disability Australia or CYDA.

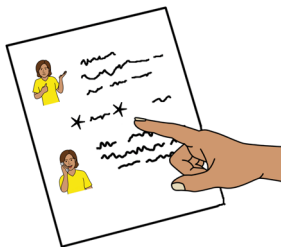


This booklet is written in a way that is easy to understand.



You can read more information about this topic on our website at

bit.ly/CYDA_students_with_disability



We add a star before and after ***hard words***.

Then we explain what the words mean.



You can ask someone to help you read and understand this booklet.



Contact information is at the end of this booklet.

About our research

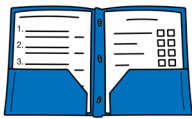


We do ***research*** about the ***experiences*** of children and young people with disability at school.



Research means

- we ask questions to learn more about something



- we write a report about what we find.

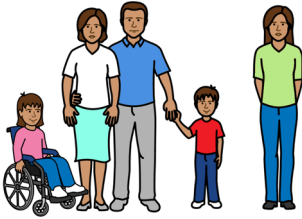


Experiences means

- what happens to you



- how you feel.

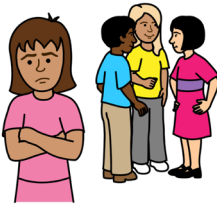


Past research has been done by families and carers of students with disability.



This research was done by students with disability.

What do we know about this topic?



Many students with disability are more likely to be

- ***segregated***



- ***suspended***



- ***expelled*.**

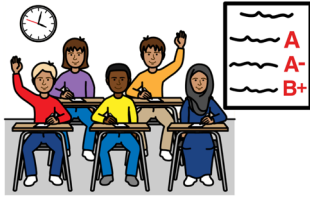
Segregated means to keep away from others.

Suspended means you cannot go to your school for a short time.

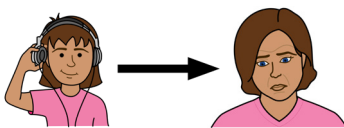
Expelled means you cannot go back to that school.



Over the last 15 years students with disability have reached higher levels at school than before.



But these levels are lower than children and young people without disability.



These experiences can affect students with disability for a long time.

About our survey



We did a ***survey*** to hear ideas from students with disability.

	1	2	3
1	<input type="checkbox"/>	<input checked="" type="checkbox"/>	<input type="checkbox"/>
2	<input checked="" type="checkbox"/>	<input type="checkbox"/>	<input type="checkbox"/>
3	<input type="checkbox"/>	<input checked="" type="checkbox"/>	<input type="checkbox"/>
4	<input type="checkbox"/>	<input type="checkbox"/>	<input checked="" type="checkbox"/>

A survey is a list of questions about a topic.



Students could get help to do the survey.
For example, they could have an Auslan interpreter.

The survey was done between 2022 and 2023.

Survey questions



The survey questions were about

- what services and supports students used at school



- how welcome students felt at school



- how well teachers and schools met the needs of students



- whether students felt ***excluded*** or ***bullied*** at school.

Excluded means to be left out.



Bullied means a person or people hurt someone lots of times.

What we found



We found that about 2 out of 3 students with disability do not feel included in all activities at school.

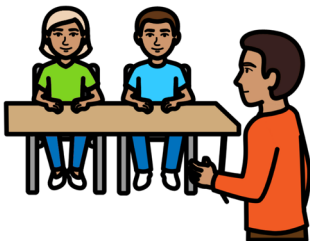


For example

- camps



- excursions



- teaching activities

- social activities.



We found that about 2 out of 3 students with disability have been bullied at school.



Students felt the bullying was because of their disability or other differences.



The bullying can happen in different ways.

For example

- mean words



- physical harm.

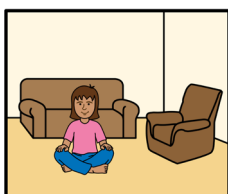


The bullying can happen

- in school

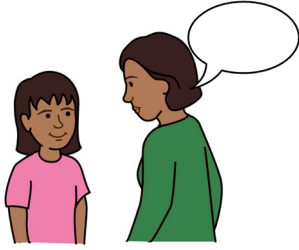


- outside of school
 - for example, through social media.



These experiences can make students want to stay away from school.

How could school be better?



We asked students how school could be better.



Most students said school staff could have better training about disability.



Some students said it would be good to have

- more teachers who understand disability



- training done by people with disability.

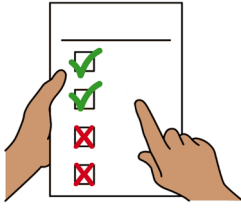


Students said teachers should understand how to make sure everyone can learn well.



Students said teachers need more time and supports in classrooms to make sure everyone is included.

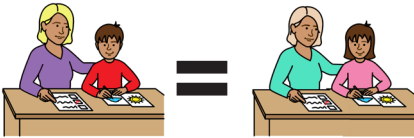
Our summary



There are rules about how to make schools more inclusive.



But students with disability still experience exclusion and bullying at school.



These experiences make it harder for people to

- get equal access to education



- have good health and wellbeing



- be connected to others and their community.



Children and Young People
with Disability Australia



Call 03 9417 1025



Visit cyda.org.au



Email info@cyda.org.au



If you need help to speak or listen, the National Relay Service can help you make a call.

Call 1800 555 660

Visit accesshub.gov.au/nrs-helpdesk



If you need help with other languages, contact the Translating and Interpreting Service.

Visit tisonational.gov.au

Easy Read Australia created this Easy Read document in July 2023 using Picture Communication Symbols (PCS). PCS and Boardmaker are trademarks of Tobii Dynavox LLC. All rights reserved. Used with permission.

You must ask for permission to use the images in this document.

For more information, please visit easyreadaust.com.au