

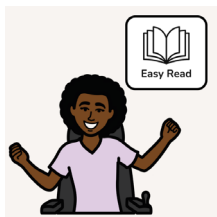


Easy Read

A Roadmap to an Inclusive Education System in South Australia

February 2026

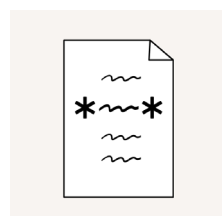
About Easy Read



This is an Easy Read book.



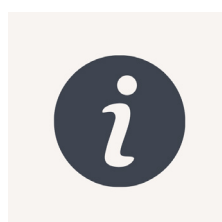
Easy Read uses simple words and pictures to explain ideas.



New words are ***bold with stars***.



We tell you what new words mean.



Easy Read is a summary.



Get more information on our website
www.cyda.org.au

About this book



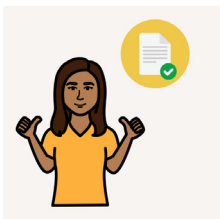
This book is from CYDA.



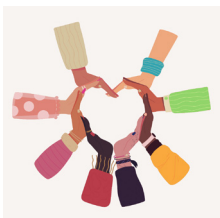
CYDA stands for Children and Young People with Disability Australia.



This book explains our ***Roadmap to an Inclusive Education System in South Australia***.



We call it **our roadmap** in this book.



Our roadmap is a guide for South Australia to lead ***inclusive*** education.



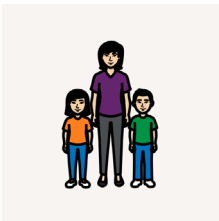
Inclusive means everyone can join in.

How did we make our roadmap?



We made our roadmap with help from

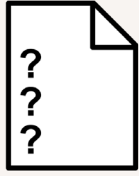
- students with disability



- parents and carers



- teachers.

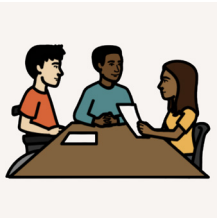


We did lots of

- surveys



- focus groups



- ***co-design*** workshops.

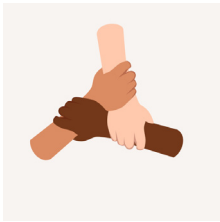


Co-design means people with disability plan and make things with us.

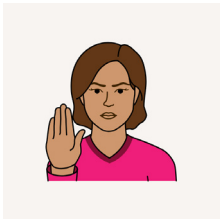
Our vision



Our vision is what we want to see in the future.

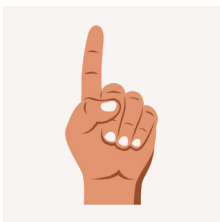


Our vision is for all students to ***start together and stay together***.



Start together and stay together means

- **no** separate schools for students with disability



- one ***accessible*** school system that helps every child do their best.



Accessible means the school meets all disability access needs.

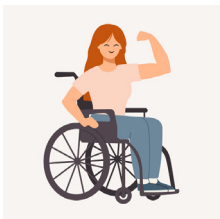
South Australia can lead the way



We think South Australia can lead the way.



South Australia is a State that can make change happen.



South Australians can take action to build a better future.

3 stages to our roadmap

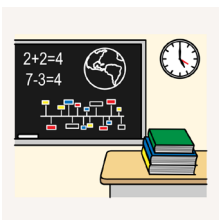
1 Belonging and inclusion



Stage 1 is about setting up for success from **2026 to 2029**.



First we need the education sector to understand inclusion and human rights.

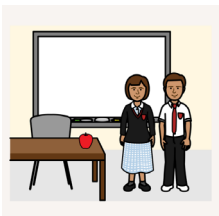


The education sector includes the people and leaders across

- State schools



- Catholic schools



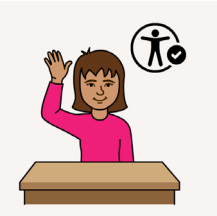
- private or independent schools.



All schools must work together to share an understanding of inclusive schools.



We must set up rewards to celebrate schools that improve inclusion.



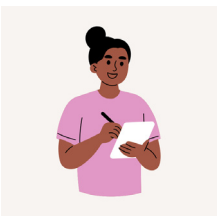
Ideas from students must shape the work.



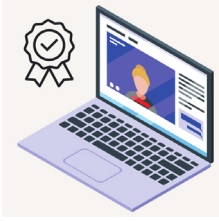
The Department for Education must set rules to guide all work on inclusive schools.



All South Australian schools must use a ***Positive Inclusion Indicator Framework***.



This framework will have clear rules and ways to measure success over time.



All schools must do training and ongoing learning to stay up to date.



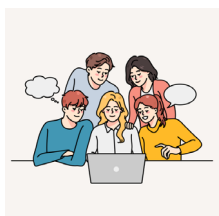
Information about inclusive education must be part of all teacher courses.



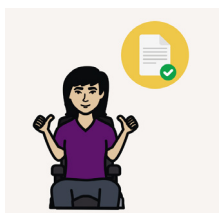
The Department for Education must work with an advisory group.



The advisory group includes people with disability.



The advisory group helps the Department for Education make a ***strategy***.



The strategy is a guide for all schools to follow to be inclusive.



The South Australian Government should ban the most dangerous ***restrictive practices***.



Restrictive practices are things people do to control the behaviour of someone else.



Restrictive practices might be

- medicine



- equipment



- separation. For example, locking someone away from others.

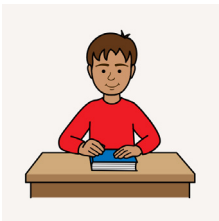


New laws must say all students with disability can enrol in ***general education***.



General education is a school that all students go to together including

- students with disability



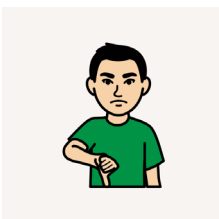
- students who do not have a disability.



No new ***segregated schools*** should be built in South Australia.



Segregated schools are schools only for students with disability.

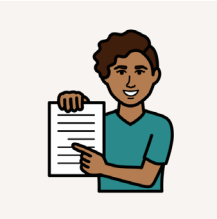


Segregated schools stop our work toward a more inclusive world.

2 Inclusive education policies



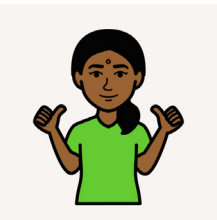
Stage 2 is about changing how we work from **2030 to 2034**.



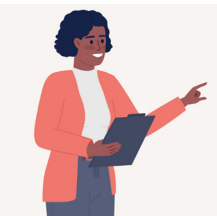
The ***curriculum*** includes lessons about disability and inclusion.



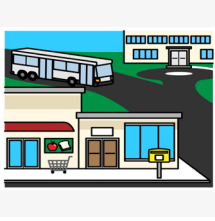
Curriculum is what students must learn in all South Australian schools.



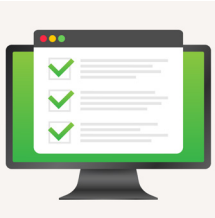
Schools have students in inclusion roles.



Schools use mentors to teach students in inclusion roles about disability inclusion.



Students do more learning in their local community to grow community connection.



The Department for Education reports on the goals and progress in a clear way.



Clear reporting helps families and students see how schools work to be more inclusive.



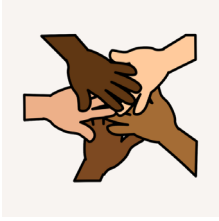
School Principals and school teams have goals they must meet to be more inclusive.



Schools have clear plans to show the work they will do to be more inclusive.



Schools know how to support students who move away from their segregated school.



Teachers have a team around them to help them work with students with disability.



The role of Education Support Officers in inclusive classrooms is checked.



Classroom teachers still help all students, including students with disability.

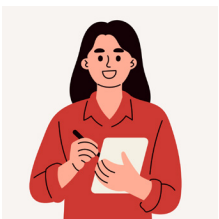


There is a full ban on restrictive practices in South Australian law.



We use a plan and clear steps to manage behaviour for students with disability that is

- safe



- checked often.

3 Thriving inclusive community



Stage 3 is about things we can do from **2035 to 2040** to make lasting change.



Over time, segregated schools shut down.



Students with disability get support to move to schools with students with other backgrounds.

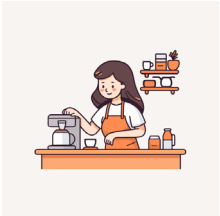


Local government and businesses help schools connect students with disability to community.



Schools and local government

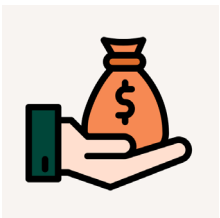
- create places like community centres for students with disability to be part of



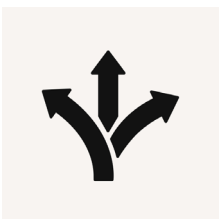
- help students with disability join the community when they finish school.



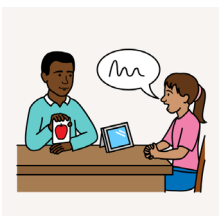
Schools work with students to plan supports with families and carers.



The money from segregated schools helps general education follow our roadmap.



South Australia's curriculum is ***flexible*** to meet learning access needs.



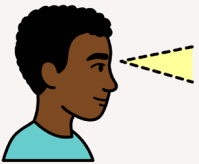
Flexible means teachers change their teaching style to meet disability needs.



South Australia will keep using the ***Expanded Core Curriculum***.



The Expanded Core Curriculum helps students with ***sensory disability***.



Sensory disability includes students who are

- blind or have low vision



- Deaf or hard of hearing.



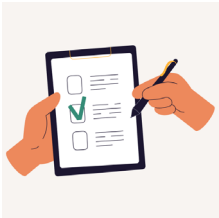
South Australians must work together to support teachers who have a disability.



Restrictive practices are against the law.



Schools manage behaviour in ways that are inclusive and safe.

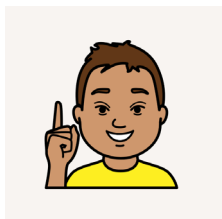


The Department for Education in South Australia will measure their work.



Measuring the work will help the department find ways to do even better.

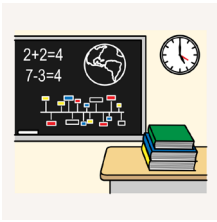
Working together



The work in this roadmap is not only for schools or teachers to follow.



Our roadmap to inclusive education can only work if South Australia works together.

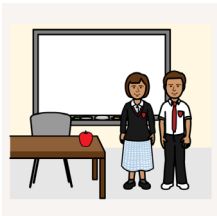


Key groups who must work together are

- the Department for Education



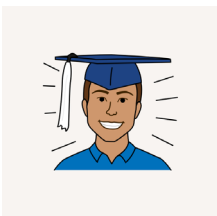
- Catholic Education SA



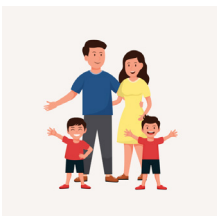
- Independent Schools SA



- the disability community



- universities

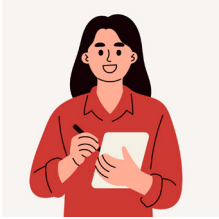


- families and carers



- young people with disability.

Checking our work



The work on this roadmap is checked and measured over time.



Clear laws and ***policies*** must guide the work of governments and schools.



Policies are rules everyone must follow.

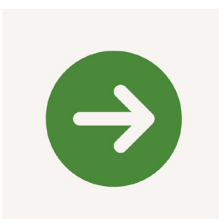


We need reports over time that say

- work completed



- what is working and what is not

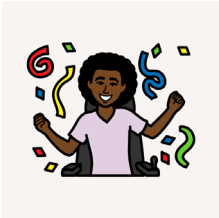


- what is next.



Reports should measure

- school enrolment numbers



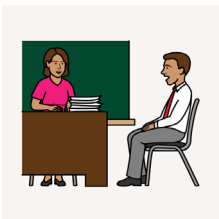
- achievements of students with disability



- the number of segregated schools closed

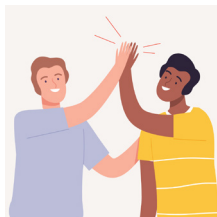


- student wellbeing



- teacher skills and confidence.

More information



Contact Children and Young People with Disability Australia for more help.



Website www.cyda.org.au



Free call 1800 222 660



Email info@cyda.org.au



Address PO Box 172
Clifton Hill VIC 3068

Help to call



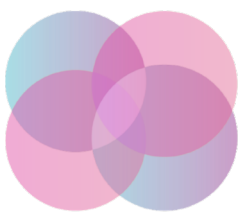
Call 131 450 for the Translating and Interpreting Service if English is not your first language.



Call 1800 555 660 for the National Relay Service if you have communication support needs.



Call 1800 555 677 if you use a teletypewriter or TTY.



Embrace **Access**

Embrace Access wrote this Easy Read book. You must ask for permission to use the words and images in this book. Picture Communication Symbols © 1981–2026 by Tobii Dynavox. All Rights Reserved Worldwide. Used with permission. Boardmaker® is a trademark of Tobii Dynavox. Contact the team at Embrace Access to create your own co-designed Easy Read book. W: www.EmbraceAccess.com.au E: info@EmbraceAccess.com.au M: 0433 759 535